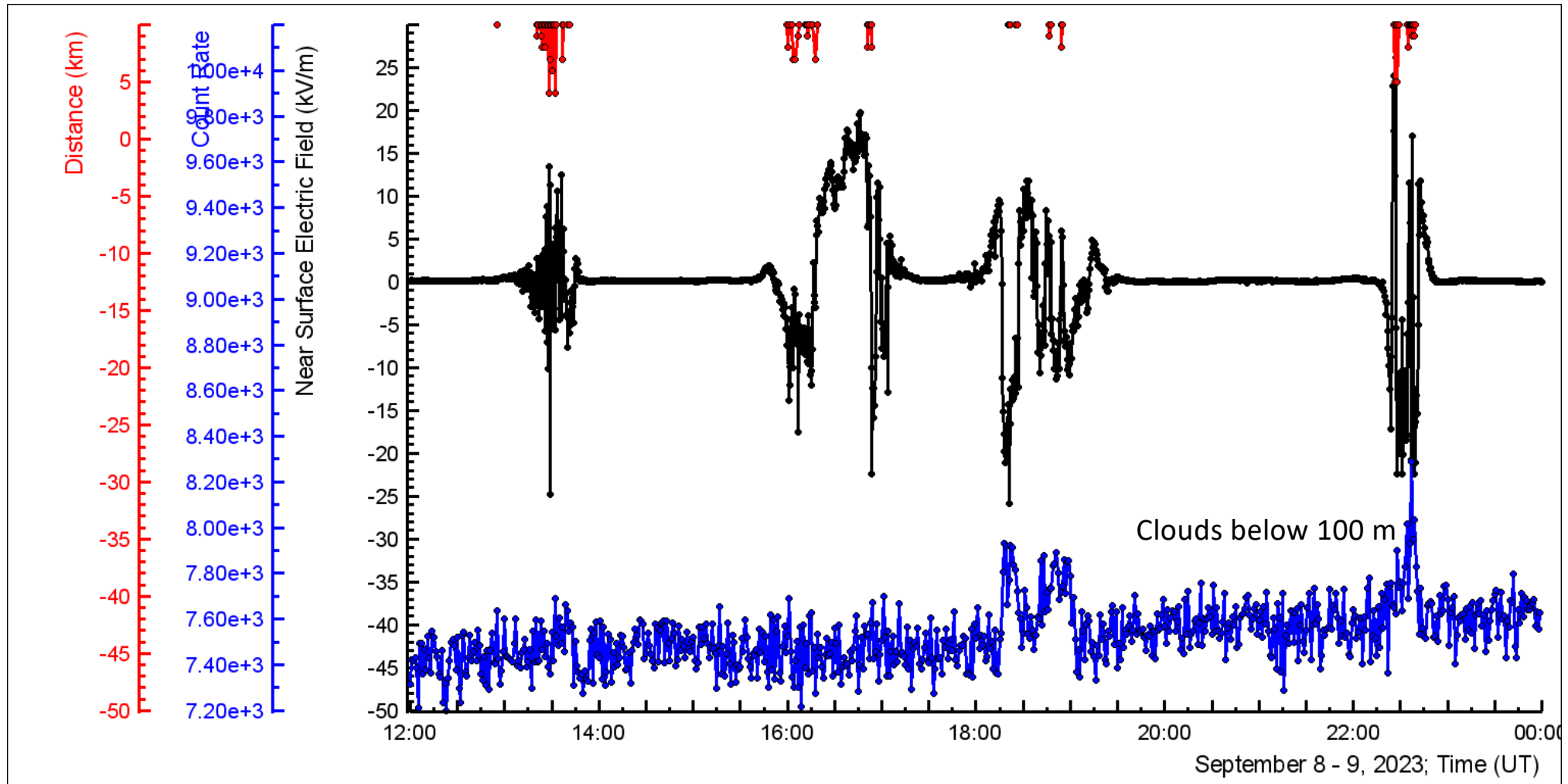
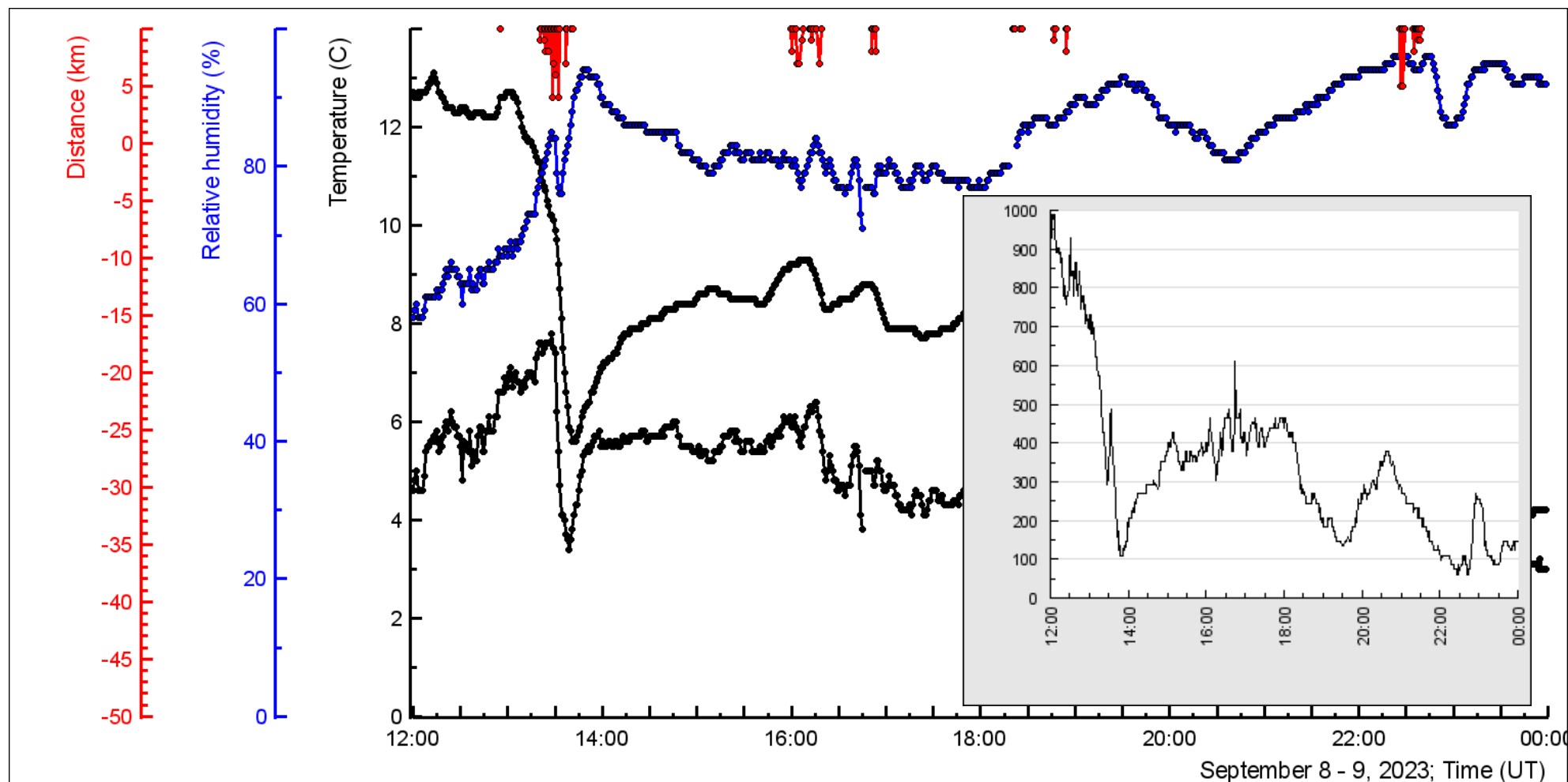


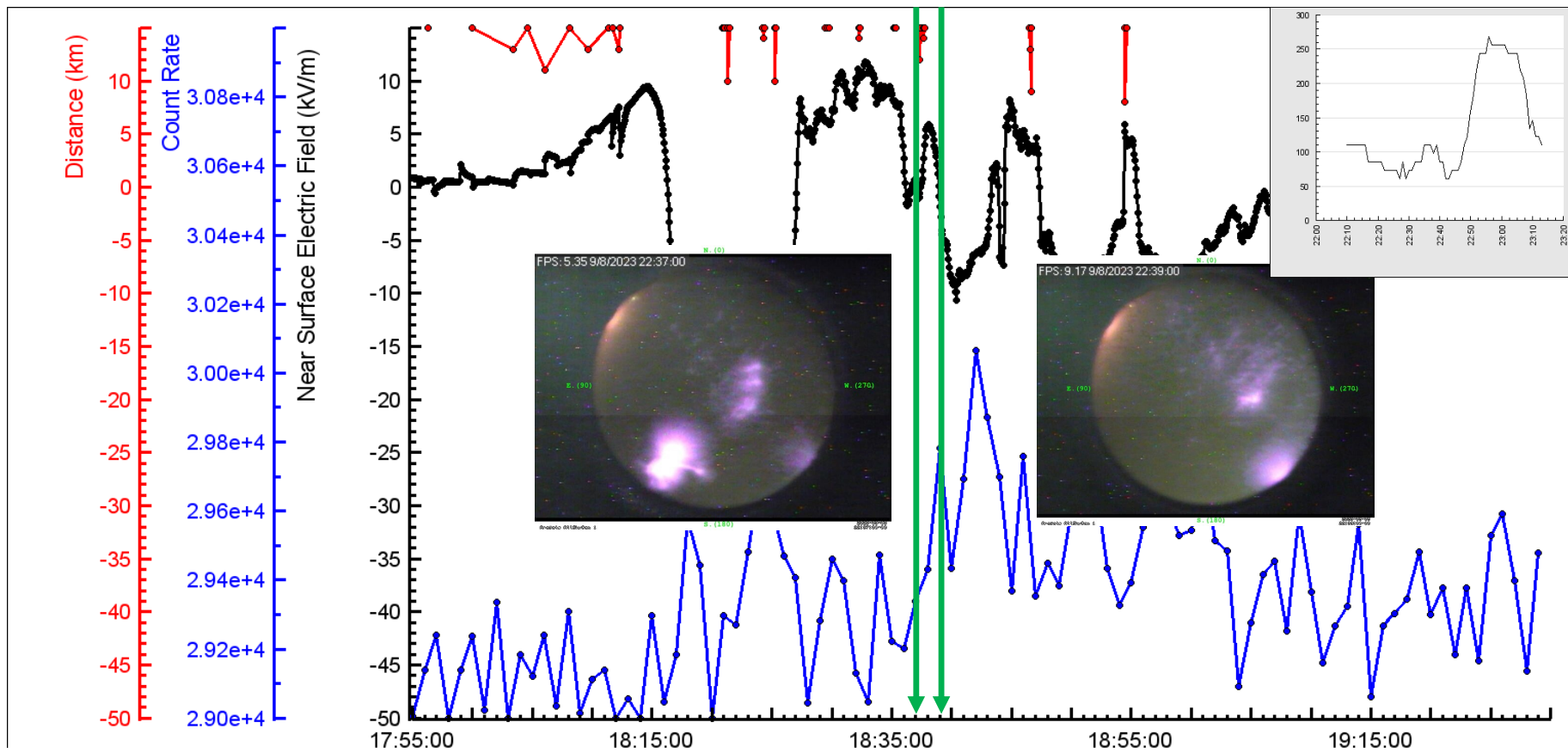
September 8: first Autumn TGEs

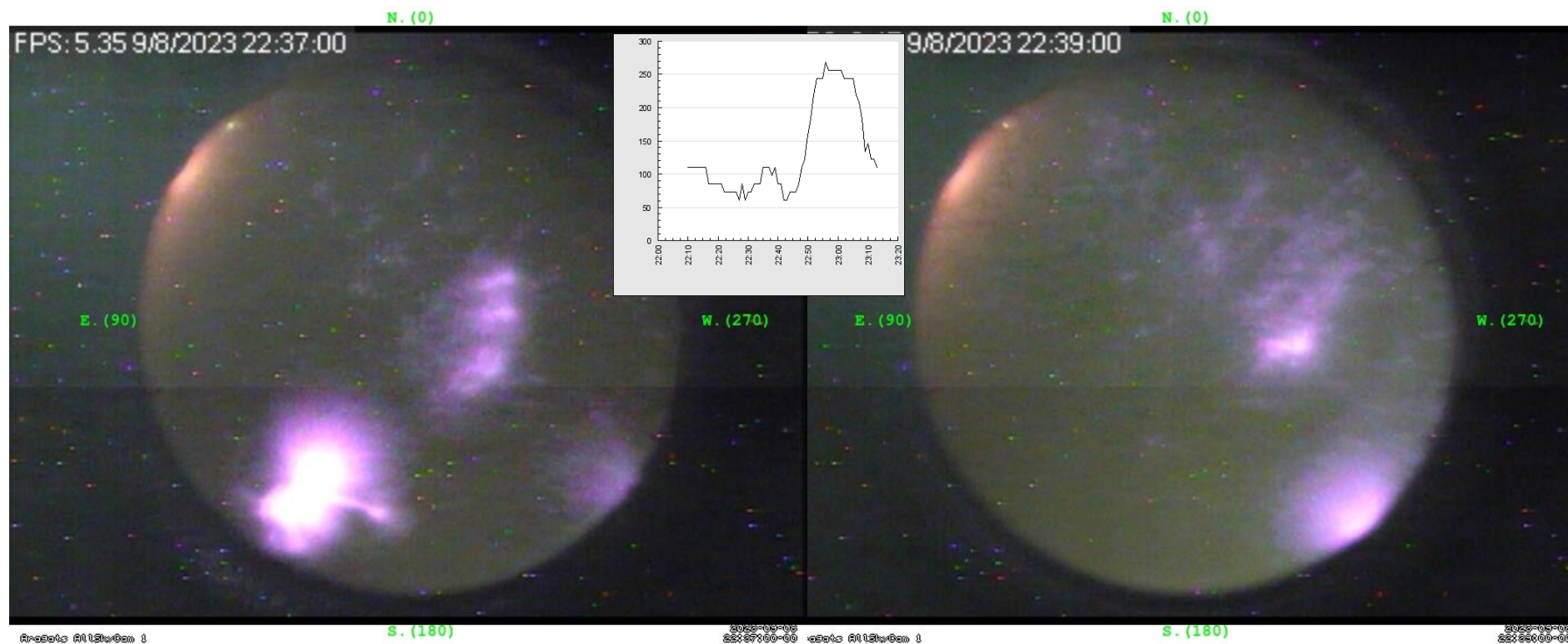
- I'll pay attention to Aragats SEVAN with new electronics allowing energy spectra to recover, as SEVAN-light on Zugspitze.
- Light glows in the sky before the peak of GLE and when the cloud base is below 100 m
- Huge Radon enhancement registered by newly tuned NaI network and STAND1 detector
- Large correlation detected during TGE between SEVAN layers, announcing high-energy gamma-ray presence
- CUBE registered 2 TGEs. Thus, energy spectra recovery will be possible both with CUBE and SEVAN: first intercalibration!

STAND3 1000 and MAKET EFM: long storm

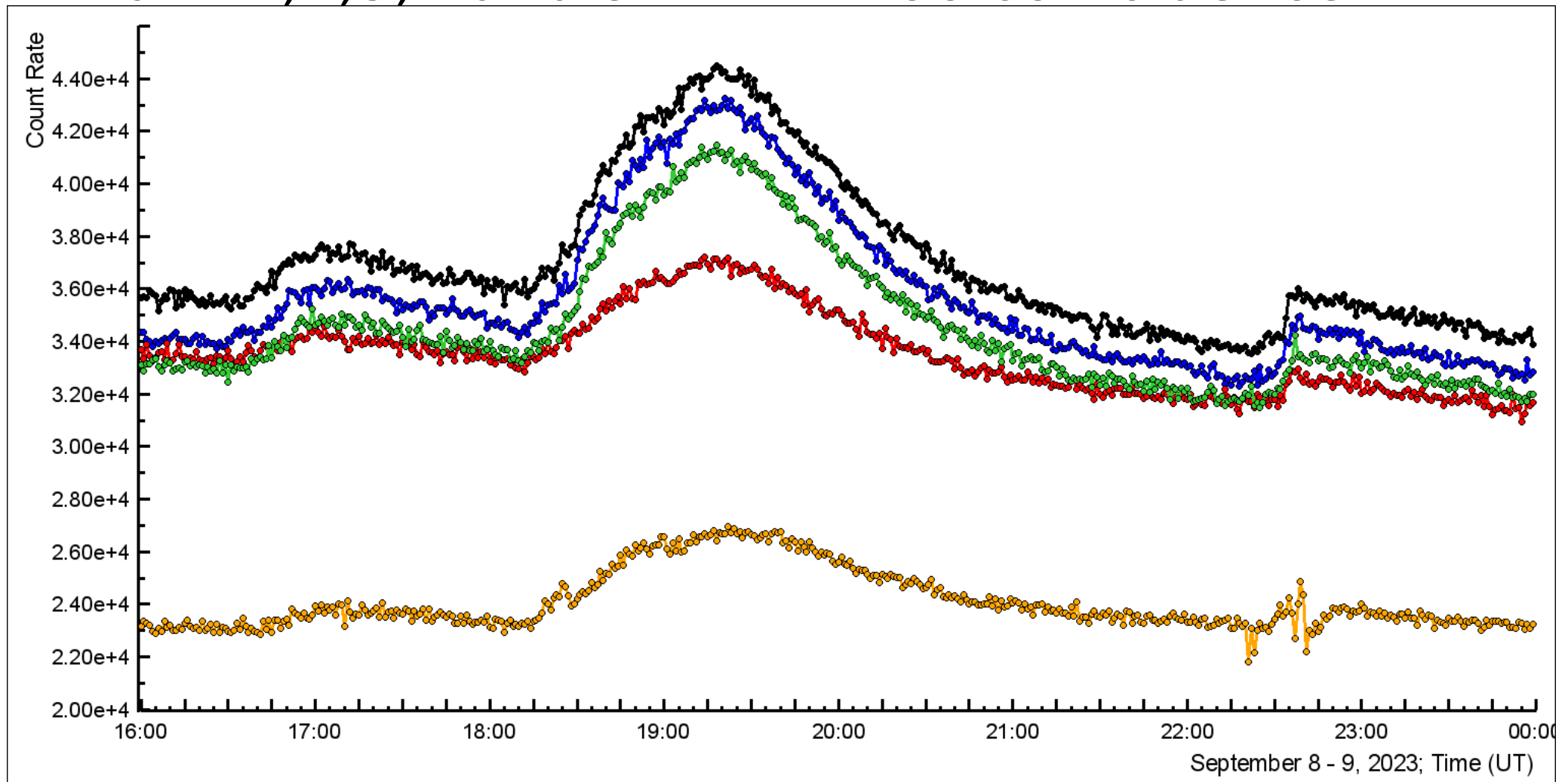




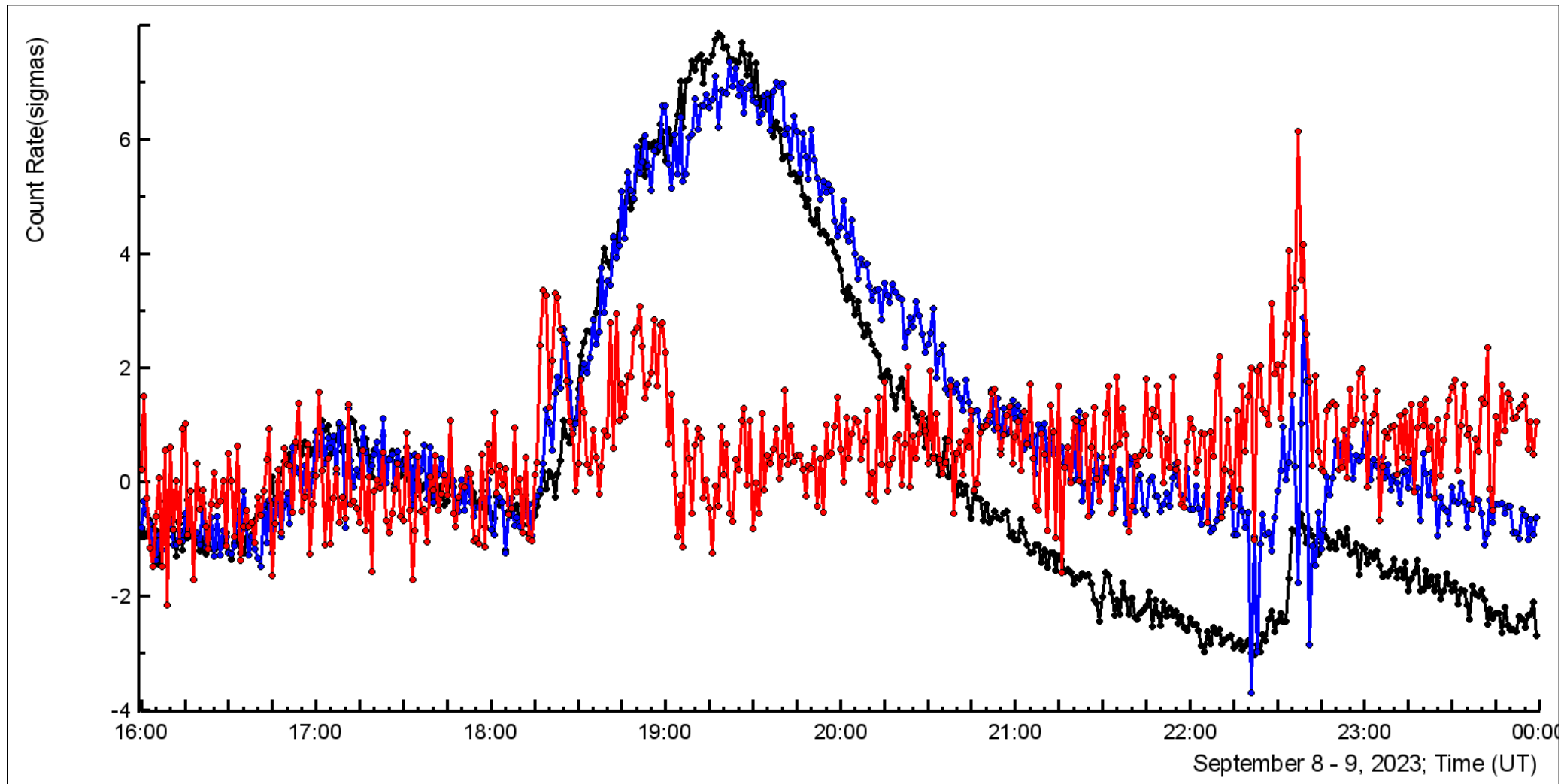




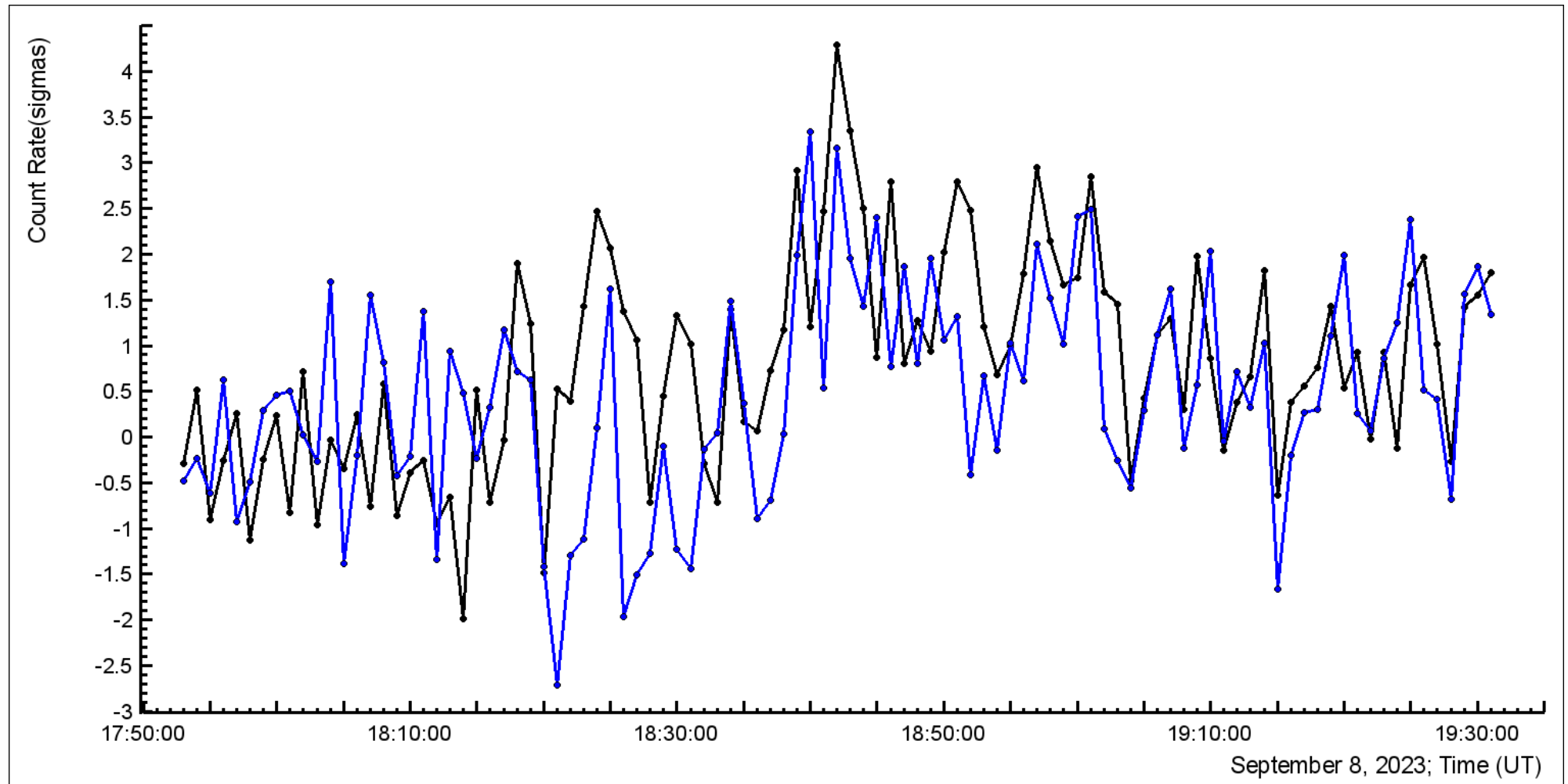
NaI N1,2,3,4 and STAND1 100 coincidence

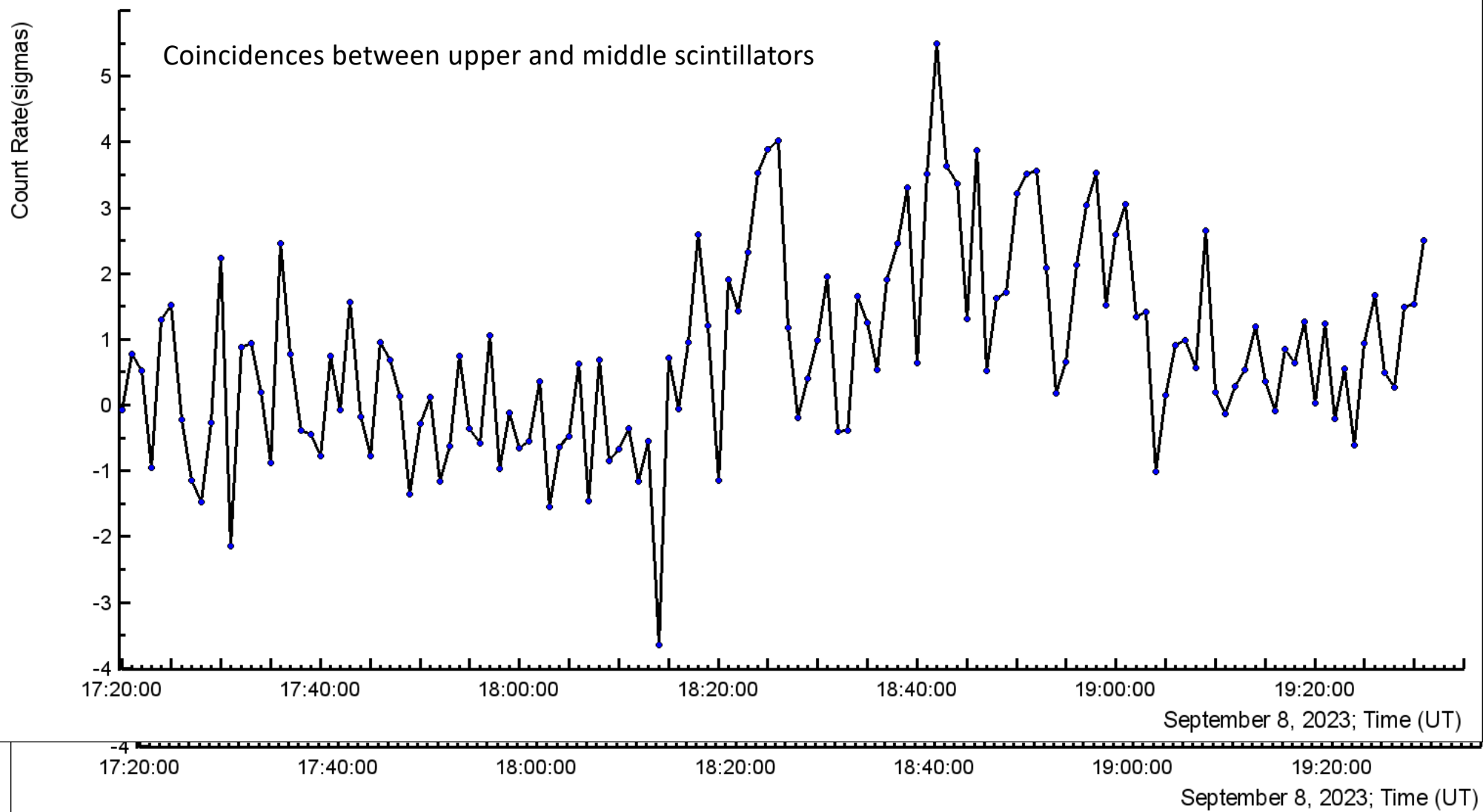


NaI N1, STAND1, and STAND3 1000

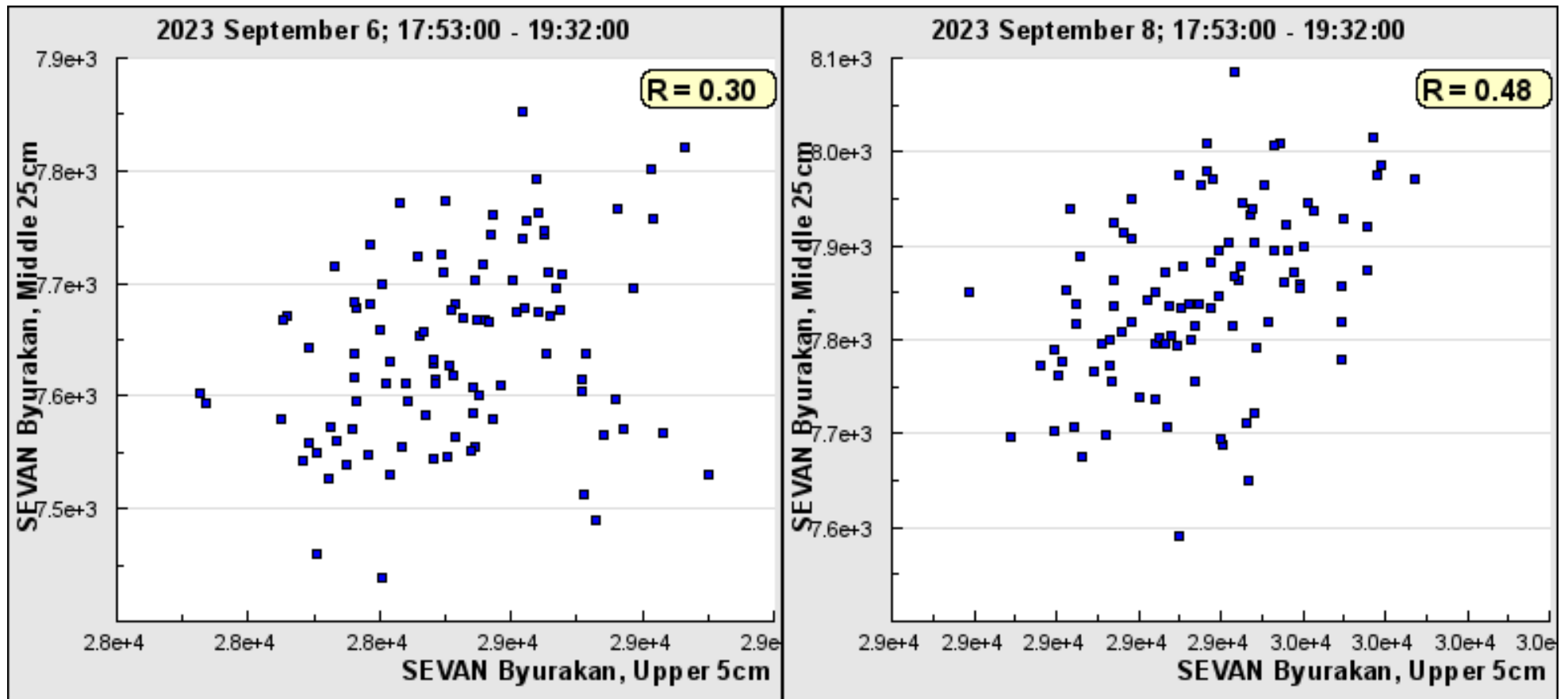


SEVAN upper and middle

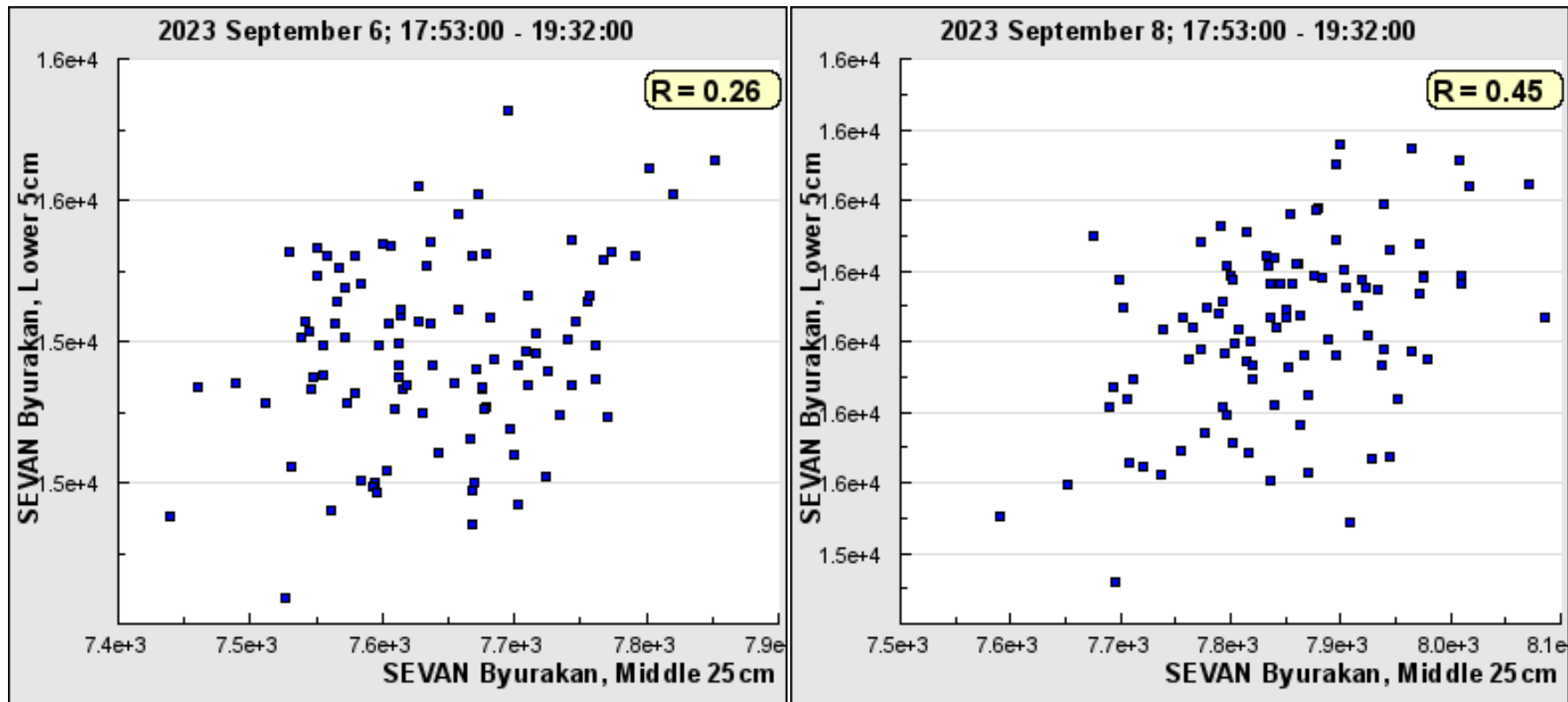




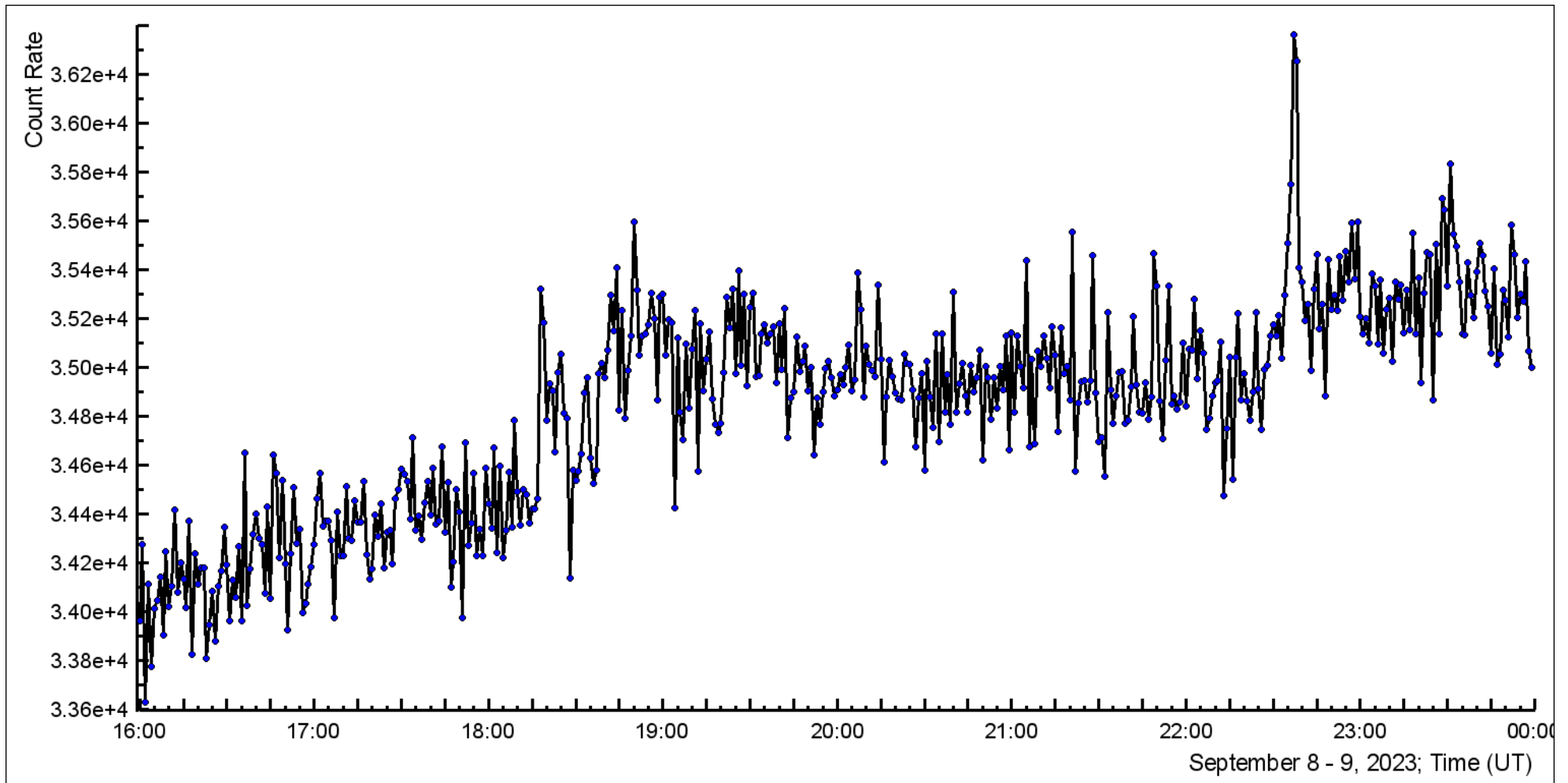
Scatter plot: upper 5 cm vs. 20 cm at fair weather and during TGE: high-energy gamma rays penetrate through lead filter!



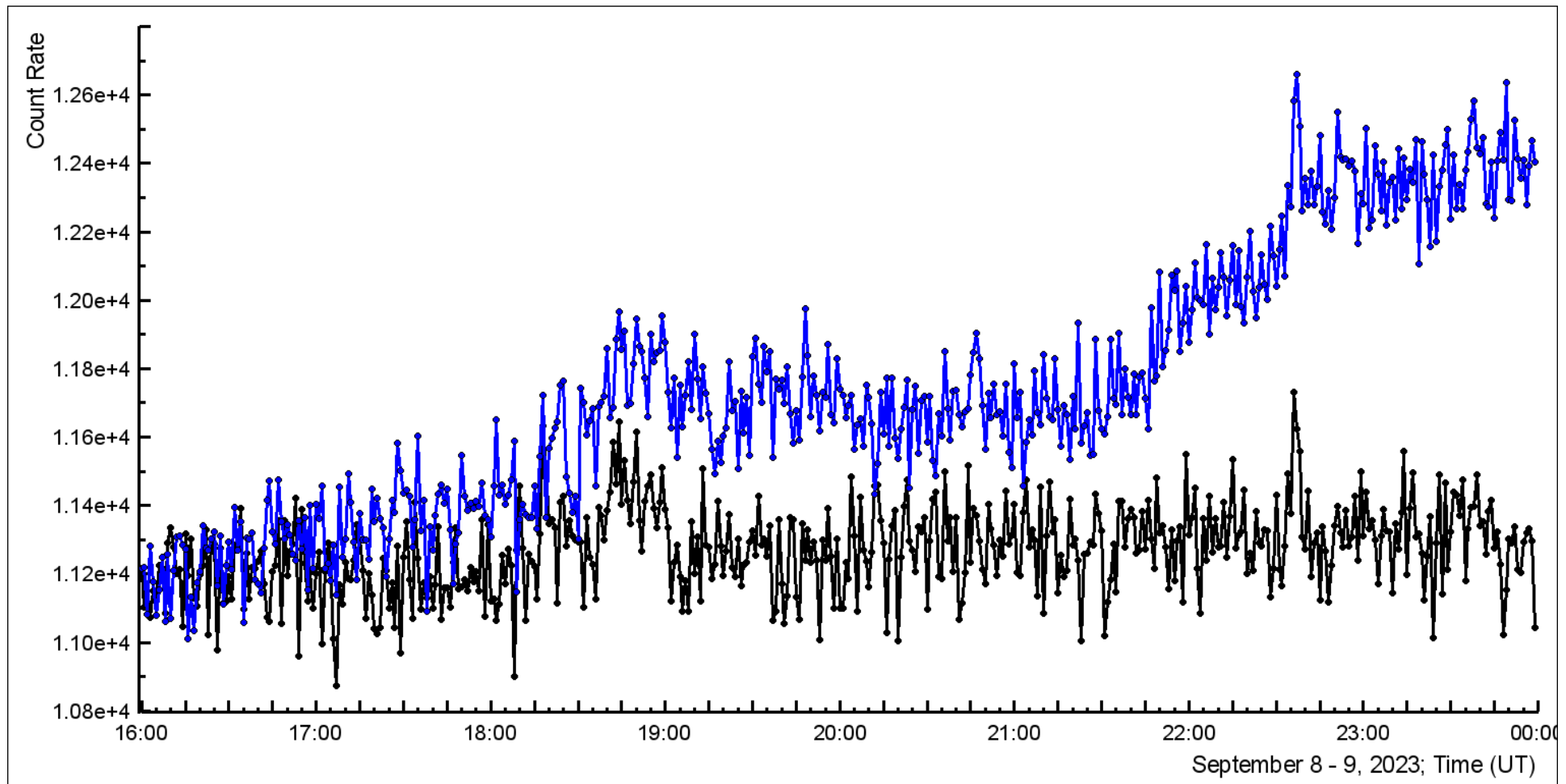
Scatter plot: lower 5 cm vs. 20 cm at fair weather and during TGE: very high-energy gamma rays penetrate through 2 lead filters!



CUBE 1 upper veto 1 cm thick scintillator



CUBE 7 and 8, 20 cm thick scintillators



CUBE 7 and 8 with veto to charge particles

